



800-504-5684

info@bigdogbumpers.com

www.bigdogbumpers.com

Chevrolet 2001-2008 2500HD/3500HD Rear Bumper Installation Instructions

1) Remove 10 bolts that mount factory bumper to truck.
(see figure 1) Retain for use in step 6. Removing towing frame is **not** necessary. Remove factory bumper by pulling upward and out. (see figure 2)

2) On one tons, fifth brake light under tailgate needs to be removed.

3) Set new bumper in place by pushing downward and in.
(See figure 3)



Figure 1



Figure 2



Figure 3

4) Attach bumper to truck frame using (4) 1/2" x 2" bolts provided and moderately tighten. (see figure 4) Reuse #10 factory bolt with #10 nut and 1/2" flat washer provided. (shown with arrow)



Figure 4`



Figure 5

5) Attach bumper to towing frame using (2) 1/2" x 2" bolts provided and moderately tighten. (see figure 5)

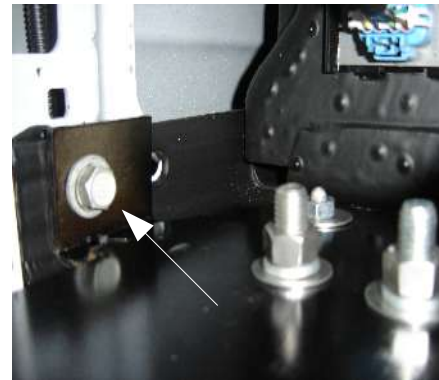


Figure 6

6) Attach bumper to truck bed with factory bolts removed in step 1. (see figure 6)

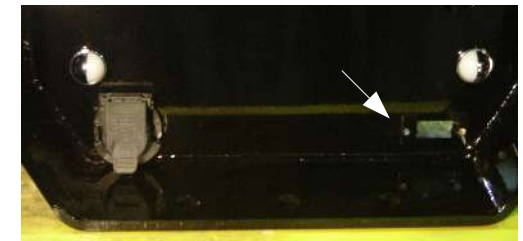


Figure 7

7) Align bumper and tighten all bolts with 75lbs of torque.

8) Wire lights provided to existing wiring on truck. Install trailer plugs to bumper. (see figure 7) Use outlet plate provided for 4-way plug. (shown with arrow)

- | | |
|----------------------------|--------------------------|
| Installation Kit Provided: | |
| (6) 1/2" x 2" hex bolts | (2) license plate lights |
| (6) 1/2" hex nuts | (2) clear oval lights |
| (8) 1/2" flat washers | (2) rubber grommets |
| (2) # 10 metric hex nuts | (2) pigtail wires |
| | (1) outlet plate(0106) |